

YEAR

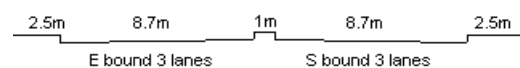
2015

LINK

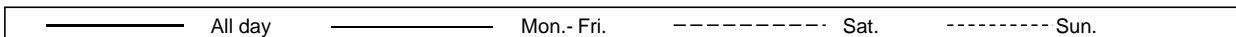
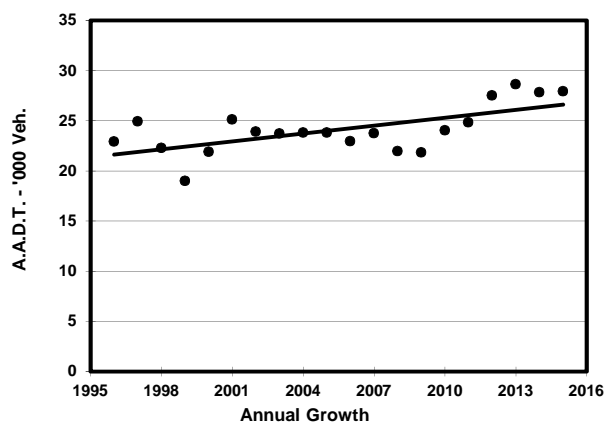
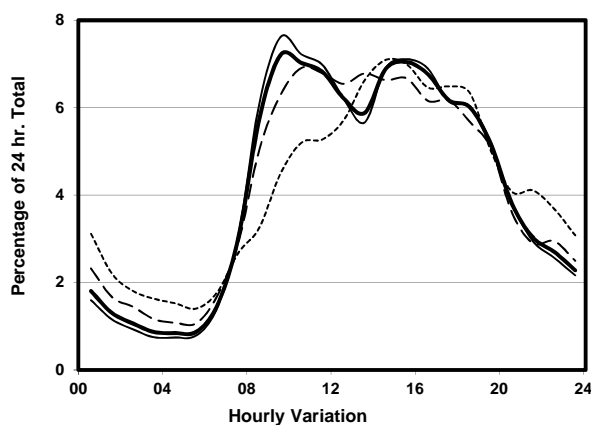
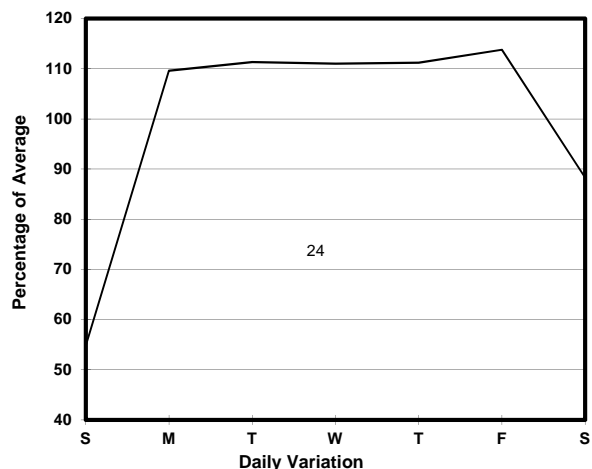
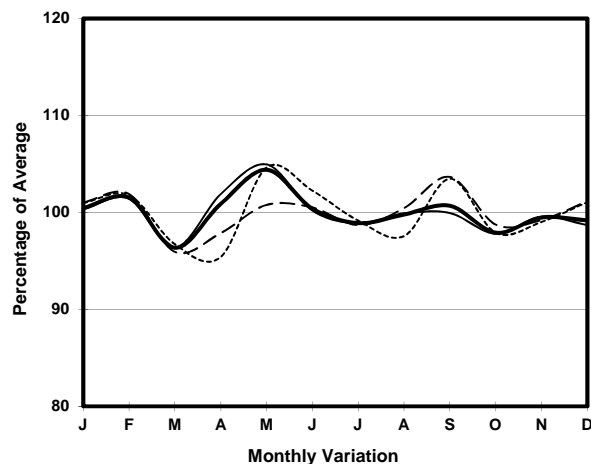
WAI YIP ST (from LAI YIP ST to HOI YUEN RD)

CORE STATION
ROAD NETWORK
ROAD TYPE

3020
MAJOR
DISTRICT DISTRIBUTOR



1. TRAFFIC FLOW VARIATION AND GROWTH



2. TRAFFIC CHARACTERISTICS (BY DIRECTION)

Parameter	All - Day	Mon. - Fri.	Sat.	Sun.
EAST BOUND				
A.A.D.T.	18860	21300	17520	11200
R 12 / 24 - %	75.5	76.6	73.8	68.7
R 16 / 24 - %	90	90.8	88.2	85.5
AM Peak Hour	0900-1000	0900-1000	0900-1000	0900-1000
One-way flow at AM peak hour	1420	1700	1150	560
T - % (AM)	-	-	-	-
PM Peak Hour	1600-1700	1600-1700	1600-1700	1800-1900
One-way flow at PM peak hour	1250	1430	1090	710
T - % (PM)	-	-	-	-
Prop.of commercial vehicles - 16 hr.	-	-	-	-
WEST BOUND				
A.A.D.T.	9070	10560	7760	4470
R 12 / 24 - %	73.2	74.7	69.8	61.4
R 16 / 24 - %	88.4	89.8	84.6	78.3
AM Peak Hour	0900-1000	0900-1000	0900-1000	0900-1000
One-way flow at AM peak hour	590	730	450	150
T - % (AM)	-	-	-	-
PM Peak Hour	1700-1800	1700-1800	1700-1800	1700-1800
One-way flow at PM peak hour	650	770	480	320
T - % (PM)	-	-	-	-
Prop.of commercial vehicles - 16 hr.	-	-	-	-

3. OTHER INFORMATION AND COMMENT